



Fire Protection at Hennepin County Solid Waste Facilities

Brooklyn Park Transfer Station



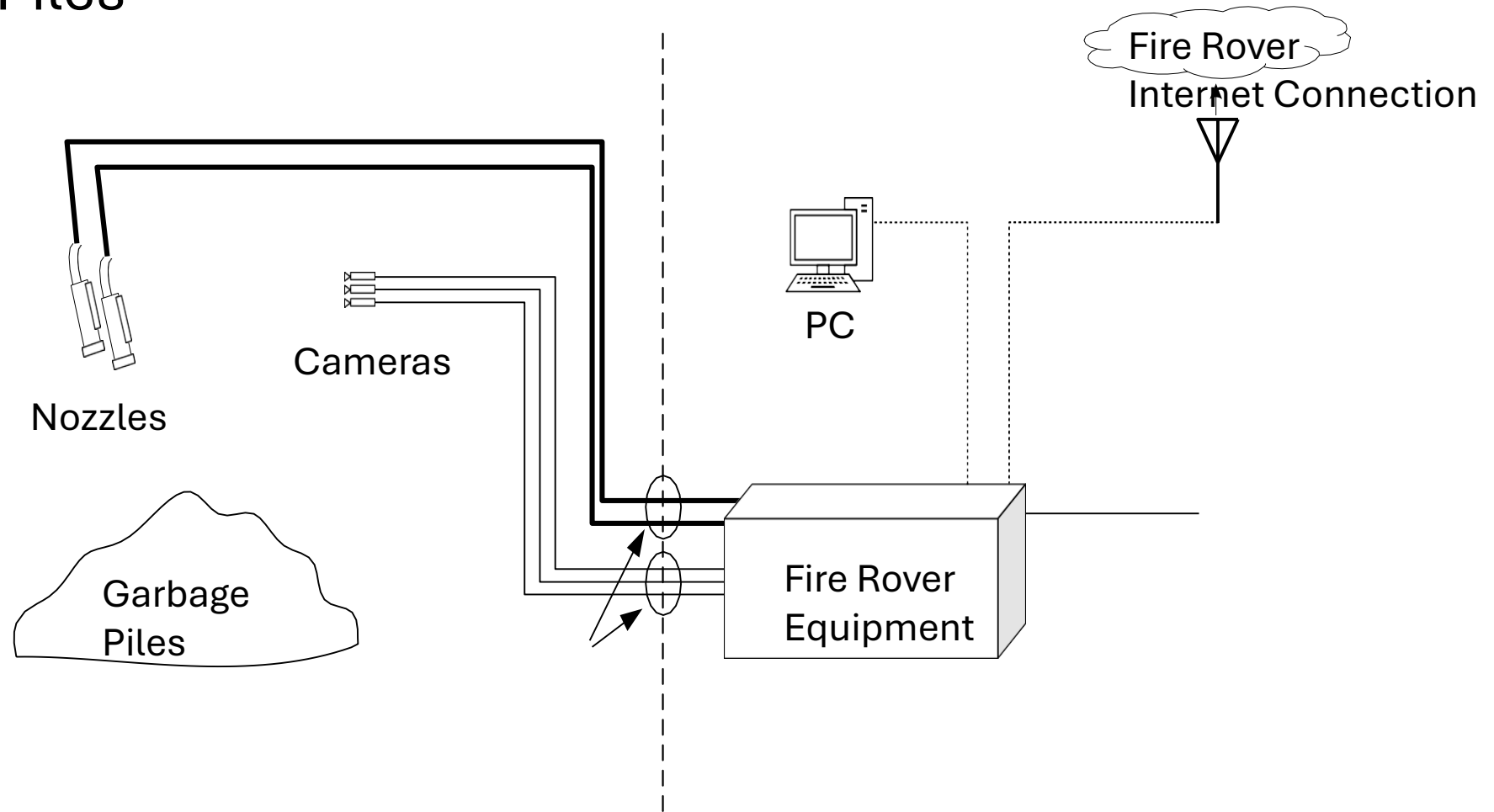
Brooklyn Park Transfer Station

- Combination of solid waste transfer operations, recycling and problem material drop-off facility and Household Hazardous Waste Facility
- Permitted to receive 200,000 tons of MSW per year
- Typically handle around 500 tons of MSW per day
- Store waste overnight
- Not manned after 4:00 p.m.



Fire Rover at BPTS

- Garbage Piles



BPTS Water Cannon



Cameras and Water Cannon



Fire Rover Equipment Box

- Nitrogen Cylinders (9)
- Fire Retardant (2 tanks)
- Communication Equipment



Fire Rover In Action

- February 10, 2023
- Fire Alarm active around 7:00 pm
- Fire units from Brooklyn Park, Osseo and West Metro were dispatched
- Fire broke out in trash pile on tipping floor
- Fire Rover detected the fire and activated water cannons
- Fire was extinguished before fire hoses could be laid down
- Upon arrival firemen doused the smoldering pile with pump cans
- Fire Marshall was very pleased with performance of Fire Rover

Fire Rover Costs

- Purchase Price = \$163,500
- Ongoing Monitoring = \$
- Costs of not adding additional fire protection?



Hennepin Energy Recovery Facility

- Owned by Hennepin County
- Operated by Great River Energy HERC Services
- Permitted capacity 3650,000 tons per year
- Pit capacity 8,000 tons
- Personnel on-site 24/7/365



Fire Protection System at HERC

New Fire Pump



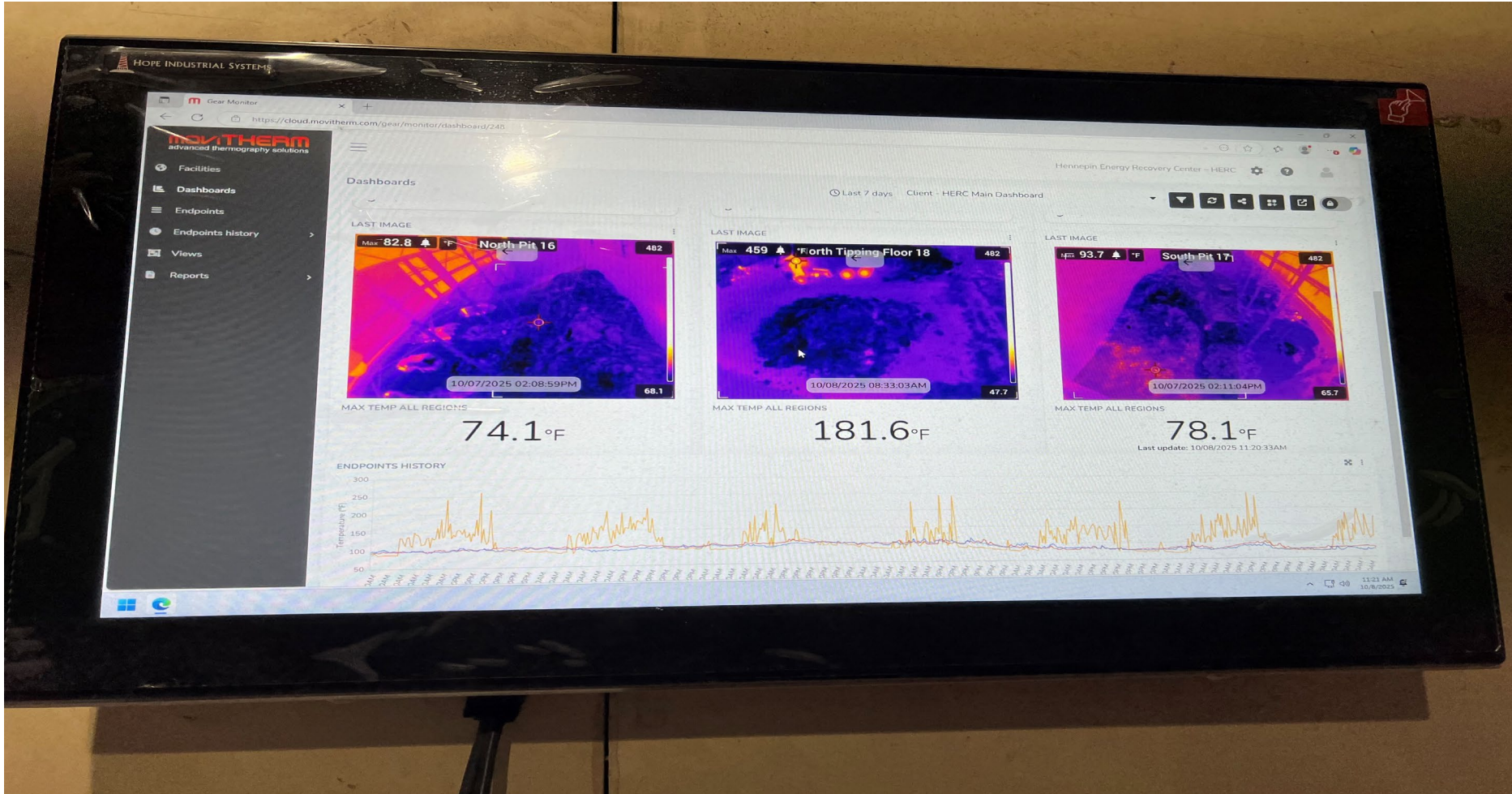
Water Cannons



Thermal Cameras overlooking waste pit



Monitor with Thermal Readings



Monitor in Crane Pulpit

