



# **Regional Dakota and Scott Counties Household Hazardous Waste Collection & Recycling Facility**

Kristi Otterson, HHW Program Manager  
Environmental Resources Department



- Dakota County Recycling Zone in Eagan is very popular.
- Current site is operating at capacity, handling four times as designed.
- Residents in western Dakota County are underserved.



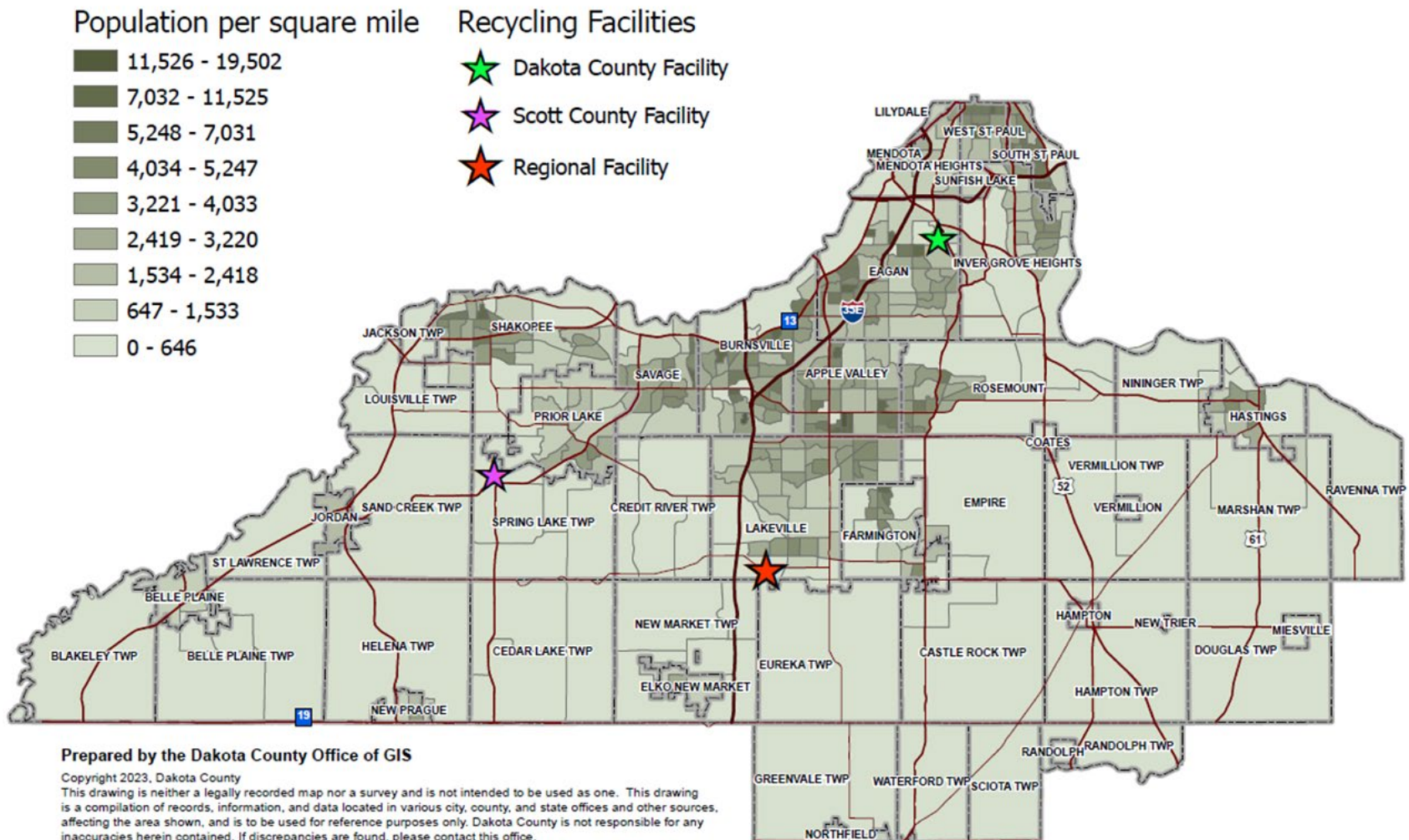
- Scott County's Household Hazardous Waste Facility operations projected to handle three times its design capacity by 2030.
- Residents in eastern Scott County are underserved.



# Recycling Zone Plus



## Total Population, 2020



Prepared by the Dakota County Office of GIS

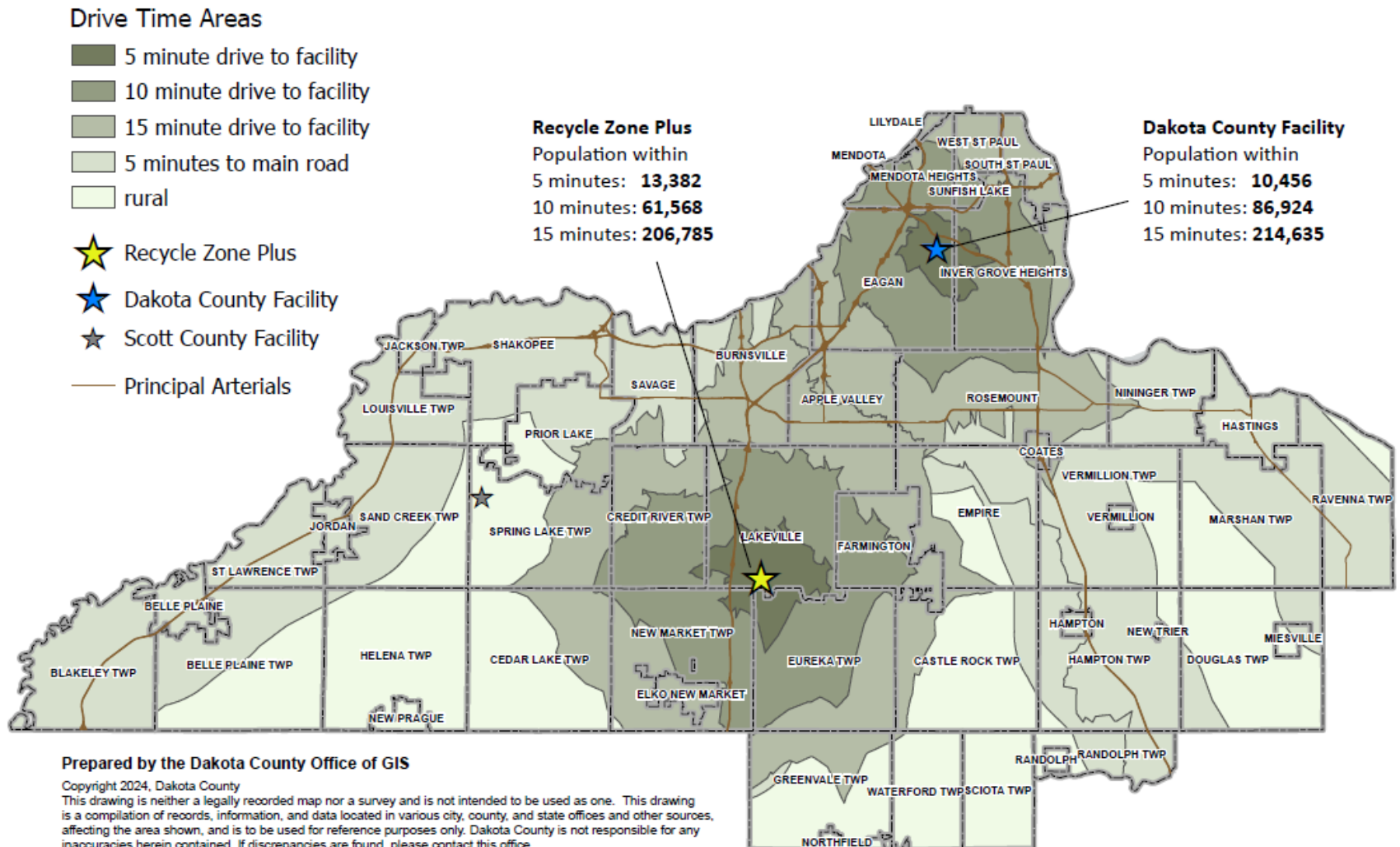
Copyright 2023, Dakota County  
This drawing is neither a legally recorded map nor a survey and is not intended to be used as one. This drawing is a compilation of records, information, and data located in various city, county, and state offices and other sources, affecting the area shown, and is to be used for reference purposes only. Dakota County is not responsible for any inaccuracies herein contained. If discrepancies are found, please contact this office.

Source: U.S. Census Bureau, Decennial Census 2020

# Recycling Zone Plus



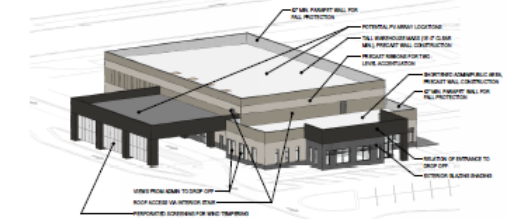
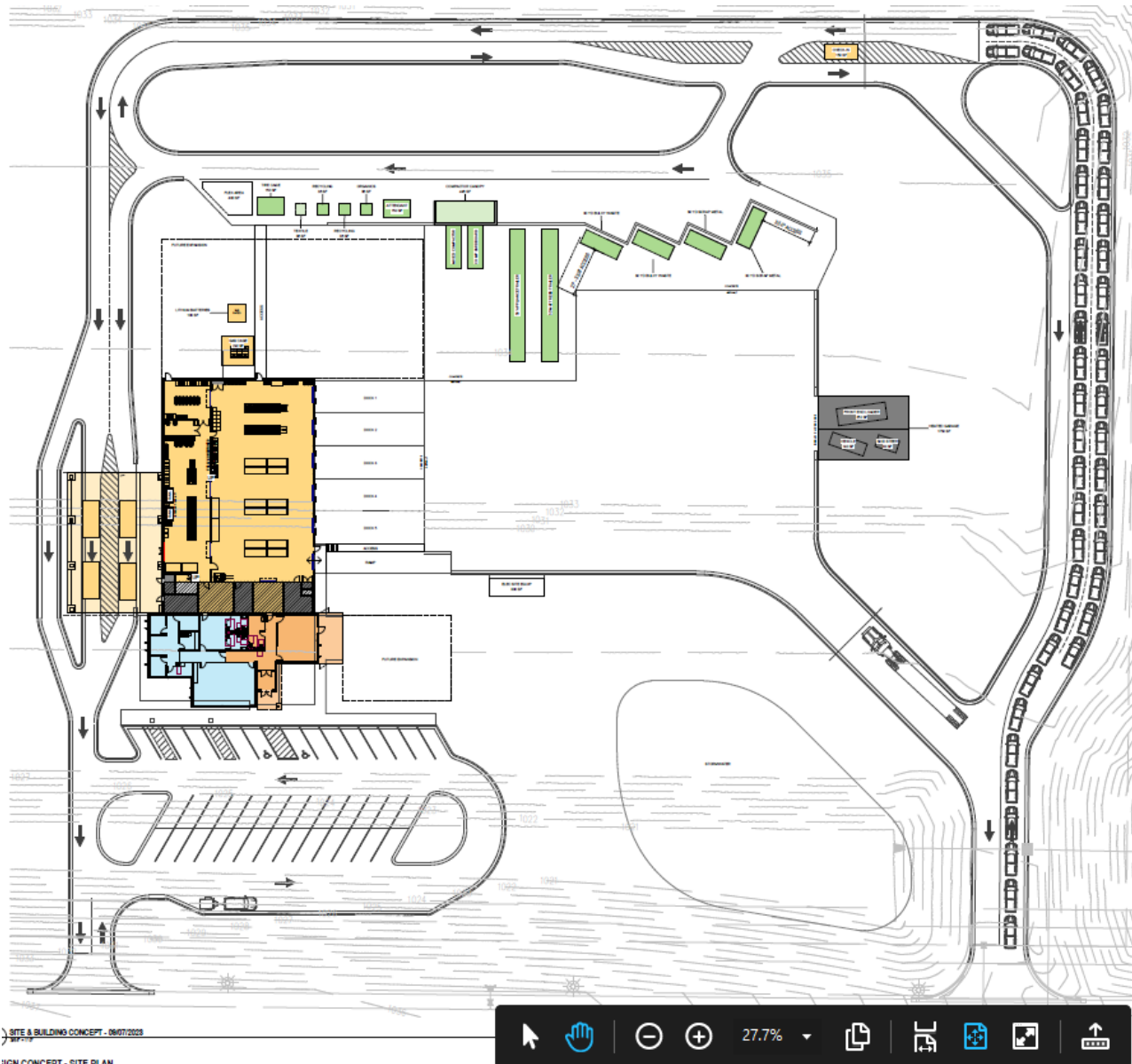
## Population by Drive Time to Recycling Facilities



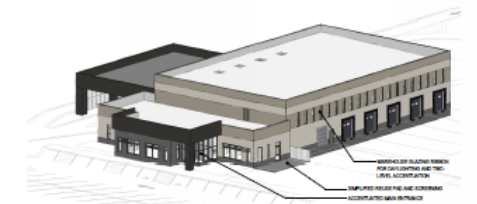
Prepared by the Dakota County Office of GIS

Copyright 2024, Dakota County  
This drawing is neither a legally recorded map nor a survey and is not intended to be used as one. This drawing is a compilation of records, information, and data located in various city, county, and state offices and other sources, affecting the area shown, and is to be used for reference purposes only. Dakota County is not responsible for any inaccuracies herein contained. If discrepancies are found, please contact this office.  
Sources: U.S. Census Bureau, Decennial Census 2020; Metropolitan Council, Regional Planned Land Use 2040.

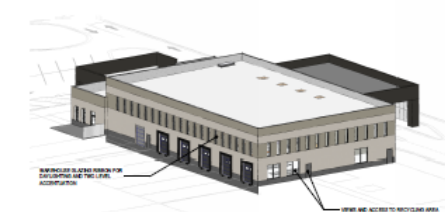
# Recycling Zone Plus



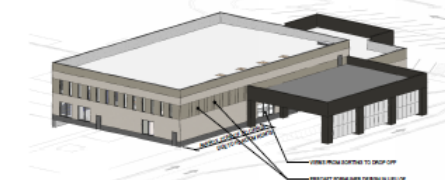
PRELIMINARY MASSING CONCEPT - FROM SOUTHWEST



PRELIMINARY MASSING CONCEPT - FROM SOUTHEAST



PRELIMINARY MASSING CONCEPT - FROM NORTHEAST



PRELIMINARY MASSING CONCEPT - FROM NORTHWEST



# Next steps

## Secure funding

- HF1860/SF2193 bonding bills
  - State CAP fund request \$8M
  - Previously CAP fund \$2M
- Federal SWIFR grant request
- Project total cost \$24M
  - JPA Dakota and Scott
- Continue planning
  - Construction docs, staffing options, operational plans, etc.



# COUNTY HHW PROGRAM EXPANSIONS

8

11 MARCH 2025  
SWAA WINTER  
TRAINING

MICHAEL ROGERS,  
CHMM  
STEARNS COUNTY  
HHW



Stearns County  
*Minnesota*



Stearns County

# Key Considerations

- Utilization
- Space
- Staffing
- Private Competition
- Private Partnership

## Examples

- E-cigarettes
- Sharps
- Facility Hours
- Mobile collections





Stearns County

# Utilization

Data from existing programs  
Public interest from anecdotal evidence  
Account for known differences  
Population, Cost, Access

# Staffing

Dry runs to estimate labor need  
Required training or other considerations

# Space

Supplies, storage, equipment    Even  
entirely

new drop off areas or workflows



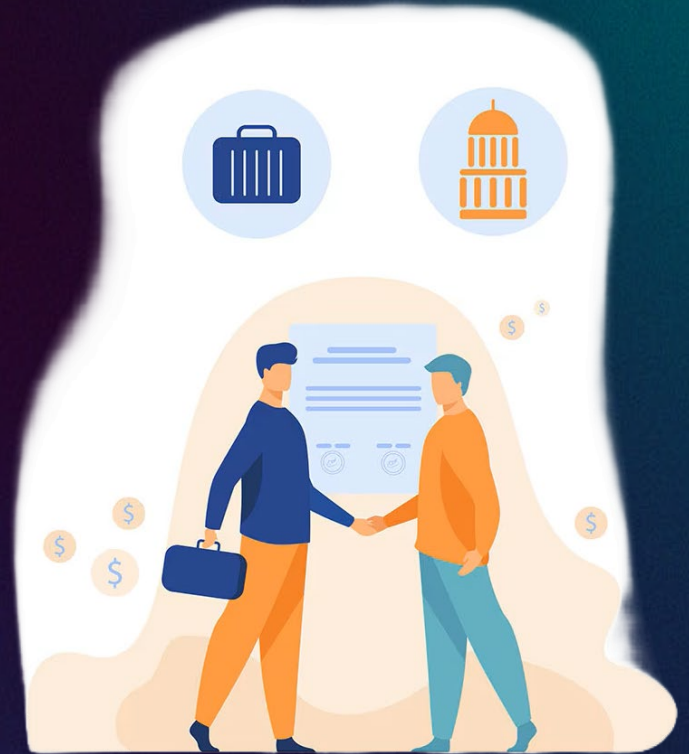
Stearns County

# Private Competition

- Can often outcompete non-government options
- Cost is a significant factor
- Accessibility is secondary
  - Location, hours, service

# Private Partners

- Can solve many other problems
- Will likely increase cost
- Could drive other businesses out
- Excellent for Advertisement In Some Cases





Stearns County

# E-Cigarettes

## Utilization

Small items  
Legal for MSW  
High use

## Staffing

No concerns

## Space

Storage for 20 pails

## Private Competition

None identified

## Private Partners

None willing to Collect  
Expensive  
Liability concerns  
Advertisements at Vape Shops

## E-Cig Recycling



Safe  
Convenient  
Responsible  
**FREE!**

E-cigarettes are just one of the many items accepted at your local Household Hazardous Waste (HHW) facility.

Search Stearns County Waste Wizard for our website or to download our app for more.



Stearns County HHW  
3601 5<sup>th</sup> St S  
Waite Park, MN  
56387

Stearns County

# Sharps

## Utilization

Largely Unknown

## Staffing

Additional Training  
Hepatitis B Vaccines

## Space

Launched With 20 1H2 Drums  
Arranged Drive Through for Drum

## Private Competition

Mail-in Sharps Containers  
MSW Collectors  
Corporate Scale Programs

## Private Partners

Advertise at Pharmacies  
Work With Sheriff's Office/Police





Stearns County

14

# Facility Hours

2024: M-F 8-4:15, 2 Saturdays 8-Noon

2025: M-Sa 7-5:15, 60 hrs/Week

Utilization

Difficult to Judge Currently  
Expected to be Minimal

Staffing

Doubled Staff to 6 FTE's  
M-Th and W-Sa shifts

Space

Locker Rooms, Office Space

Private Competition

Minimal Impact





Stearns County

# HHW Mobile Collections

Increased Number and Duration of Events

2024: 19 Events, ~3 Hours Each

2025: 29 Events, ~7 Hours Each

Utilization

Expected to be Minimal Increase

May have some surprises

Increase expected to be

temporary  
Staffing

Staff Overlap on Wednesdays and

Thursday  
Space

Truck Required to be Unloaded

Rapidly

No room for second trailer

Needed Sites in New Communities





Stearns County

16

# THANK YOU!

MICHAEL ROGERS, CHMM  
MICHAEL.ROGERS@STEARNSCOUNTYMN.GOV  
(320)257-8607





# HOUSEHOLD HAZARDOUS WASTE FACILITY

Jillian Carlson – Environmental Specialist  
Maureen Mossak – Environmental Specialist

SWAA Winter Training 2025



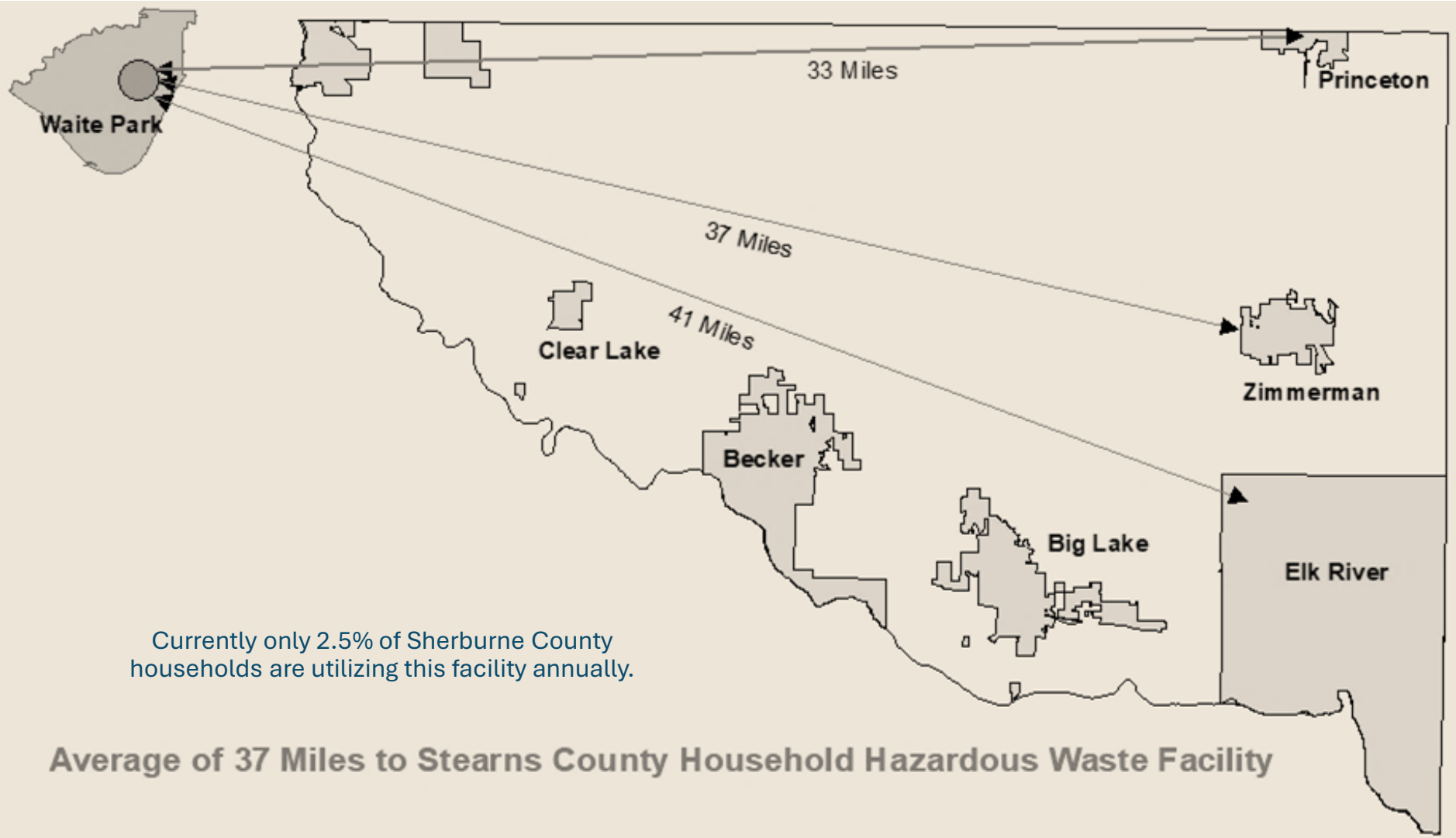


# HISTORY

- Manage Household Hazardous waste through mobile events using vendors
- Contract with Stearn's County HHW facility



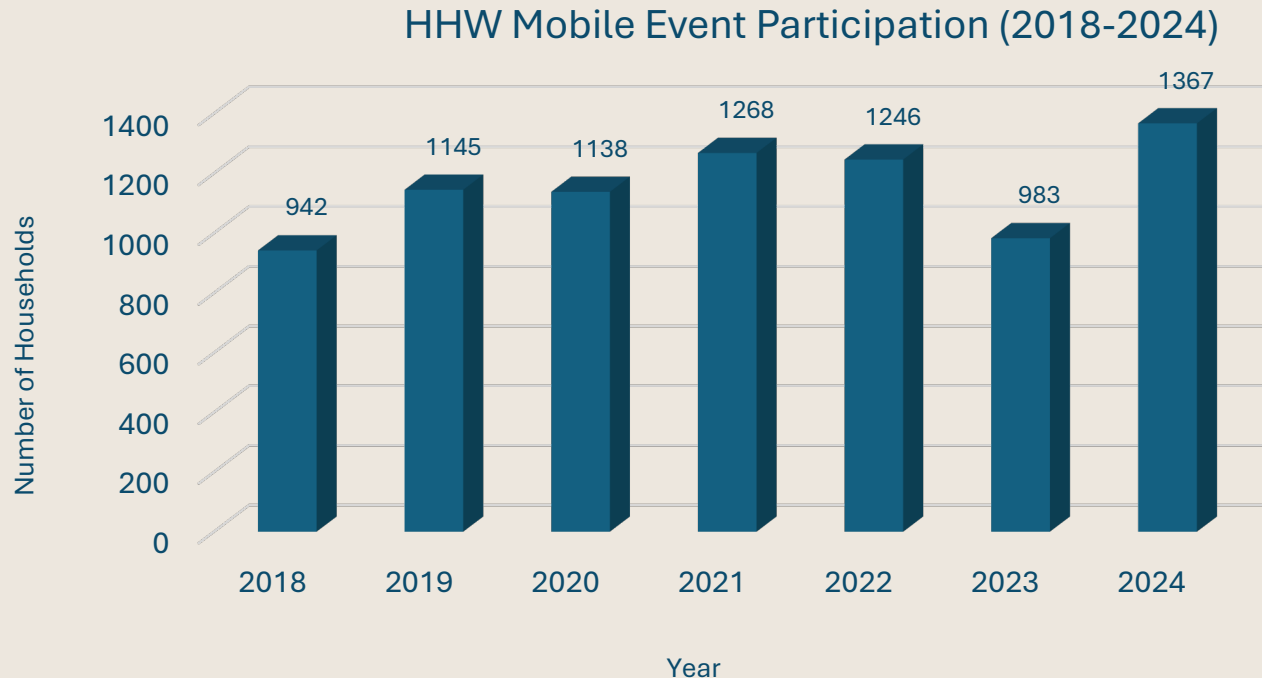
05/10/2022  
16:08



# HHW PARTICIPATION

## Mobile Events

- No cost to residents
- Host 8 mobile events per year
- Participation continues to grow
- Highest participation in 2024





# MOBILE EVENTS

---

- Mobile events are heavily used with excessive wait times with long lines
- Adding new events is not an option and there are limited places within the Sherburne County to safely hold such events due to inadequate traffic flow and preventative spill measures
- Sherburne County must schedule events a year in advance as there are limited vendors as well as a limited number of days our Vendors are available – meaning we compete with other local units of government.
- Events occurs regardless of rain – even heavy rain. Cancellations only occur if severe weather is threatening.
  - Weather impacts participation



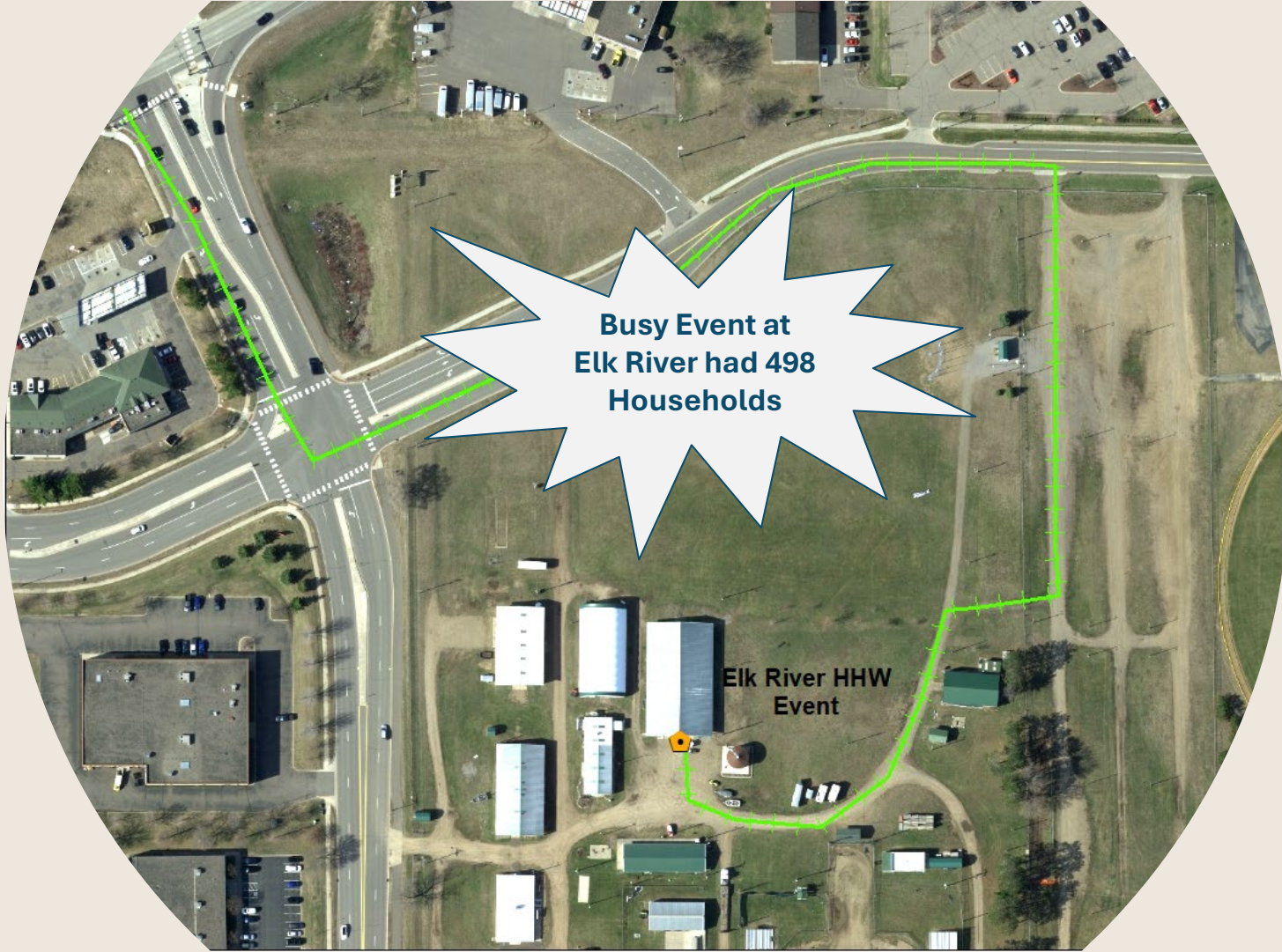


We had 504  
households at this  
Location 10/7/22

Zimmerman HHW  
Event







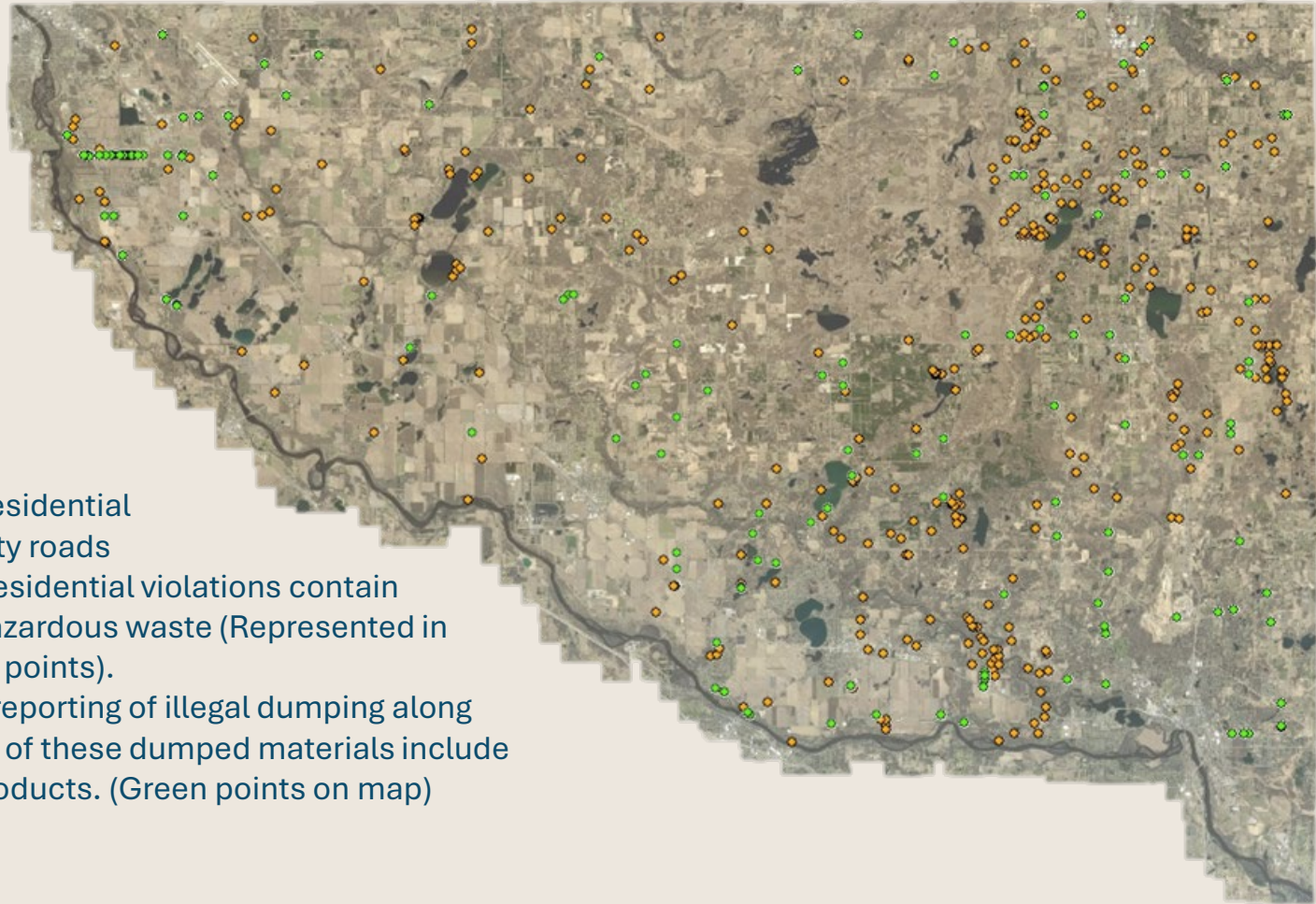
**Busy Event at  
Elk River had 498  
Households**

**Elk River HHW  
Event**



# ILLEGAL DUMPING

- Illegal dumping on residential properties and county roads
- The majority of our residential violations contain improperly stored hazardous waste (Represented in the map with orange points).
- Public works tracks reporting of illegal dumping along County roads. Some of these dumped materials include hazardous waste products. (Green points on map)






# SOLUTIONS FOR HHW MANAGEMENT

- Re-evaluate current management of HHW
- Keep HHW materials out of the landfill, decrease illegal dumping, and stockpiling
- Provide convenient disposal options for residents to decrease long wait times
- Increase overall collection of HHW generated within the County
- Seek possible solutions



The graphic features a dark blue triangle on the left containing the title 'FEASIBILITY STUDY' in white. To its right is a teal triangle, and below the dark blue one is a green triangle. The background is a light beige color with thin green lines intersecting diagonally.

# FEASIBILITY STUDY

- Drafted Request for Proposal (RFP) for consultants to bid on HHW Feasibility Study
- Contracted with HDR to complete a feasibility study
- The feasibility study demonstrates a need for a permanent HHW facility within the County allowing us to bring this study to our board and advocate for a permanent facility
- The study showed that a facility is particularly necessary due to the County's geology – sandy soils and high-water table. There is an increased environmental risk if HHW disposed of improperly
  - Increased risk equals increased responsibility on the County's part to protect our residents and natural resources
- A permanent facility would provide more frequent and convenient disposal options for residents, increasing overall collection of HHW generated



# RESULTS OF FEASIBILITY STUDY

- **Researched potential locations**
  - Assessed 89 parcels, narrowing them down to 5 sites that best met facility requirements
  - Locations were evaluated based on key factors such as size, accessibility, zoning, utilities, etc.
- **Provided cost estimates for facility layout**
  - Provided a summary of projected construction and operational costs to guide future planning
- **Identified potential partnerships**
  - Conducted surveys of both public and private sector partners
- **Provided solid framework for strategic decision-making**
  - Equipped staff and board members with a structured approach for future planning of HHW management



# NEXT STEPS



Conducted HHW facility tours to determine needs/wants for facility

Presented at cities/townships expressing the need for a permanent facility

Explored co-locating with another public entity when determining permanent facility location

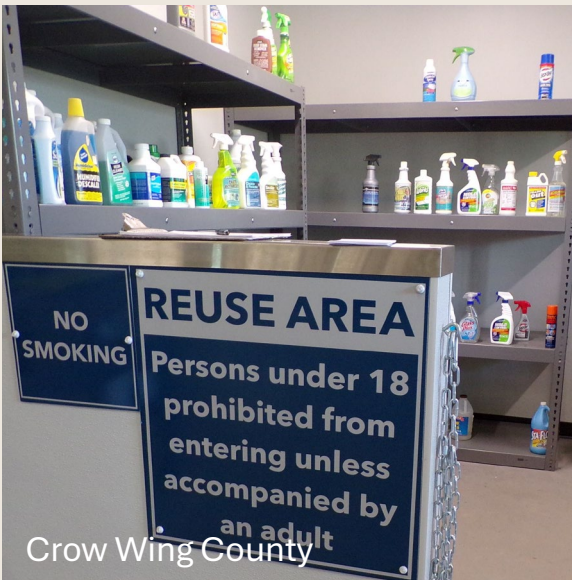
Explored grant dollars (Greater MN Grant)

Conceptualized design ideas within Department



# HHW FACILITY TOURS

- Large drive lane
- Sensor alerts when vehicle approaches
- Storage area/Racking storage
- Self-Serve area for recyclables and organics
- Staffed Reuse/Free Product room
  - possible paint mixing for reuse
- Adequate office space
- Education Room



Crow Wing County



Washington County



Hennepin County - Brooklyn Park

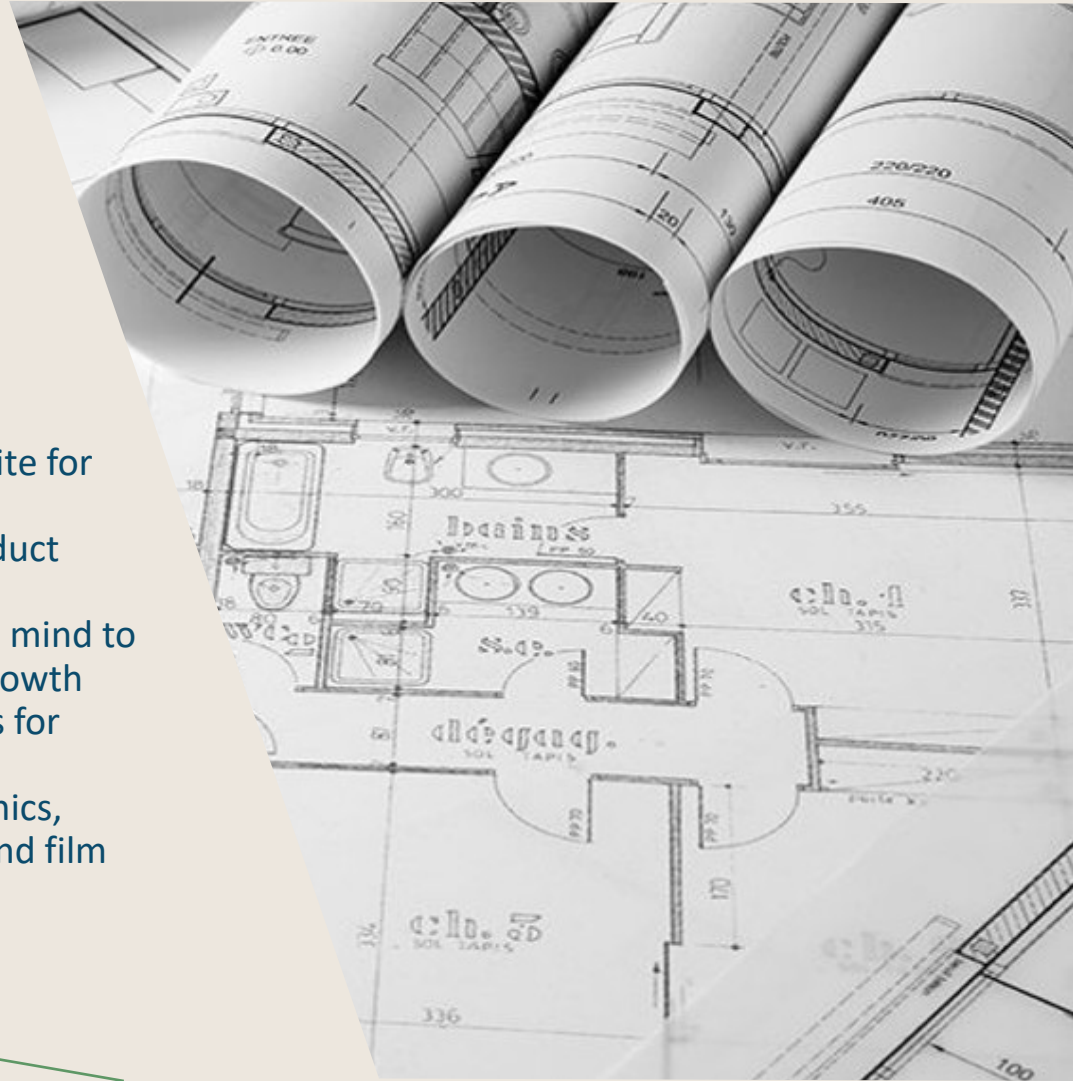


Washington County

# SCOPE OF HHW FACILITY

Primary function of the facility:

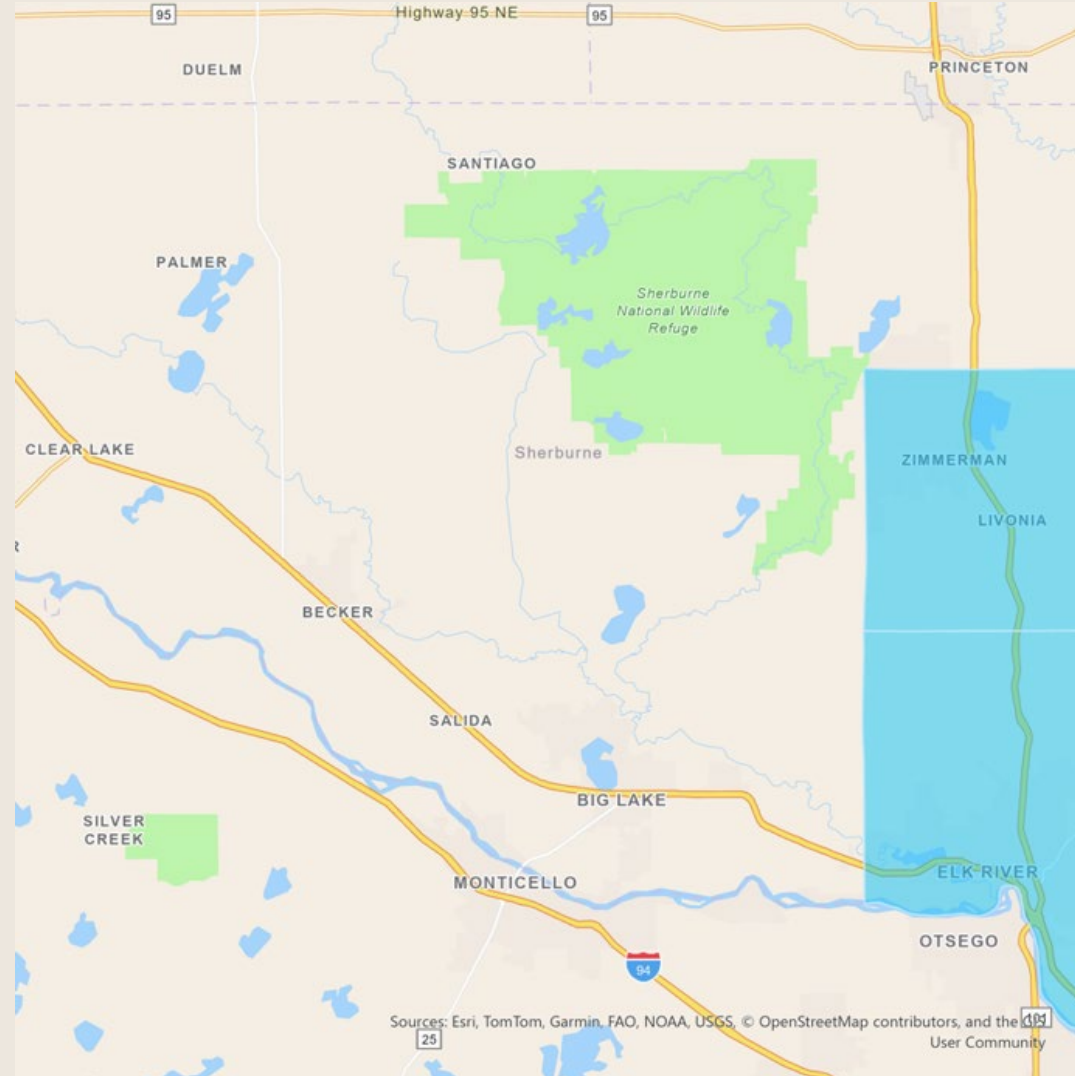
- Serves as a residential collection site for HHW and other recyclables
- Includes a staffed Reuse/Free Product room
- Designed with future expansion in mind to support the County's continued growth
- Potential to offer recycling options for additional materials, such as:
  - Electronics, Mattresses, Organics, Cardboard, Styrofoam, tires and film plastics.





# LOCATION TBD

- Based on our population density and traffic flow the County is looking at locations in the Zimmerman and Elk River areas.
- No specific parcels are identified currently, as there is still discussion on the scope of the facility in terms of the possibility of co-locating with another public organization.
- Real estate broker currently narrowing down parcels based on size/needs
- Based on location, the department would continue with limited mobile collection events to ensure all residents in the County have adequate access to disposal options.





# TAKEAWAYS

- Identify and adapt to the changing needs of a growing population and waste stream
- Develop a long-term solution for HHW management
- Provide other Counties with a framework for transitioning from mobile events to a permanent facility





Questions?