



“Out of the Box” Waste Prevention and Practical Plan and Outreach

Brian Olson

Beltrami County Solid Waste Administrator & Public Works Safety Coordinator

Beltrami County

Census: 2010: 44,442

2018: 46,117

2019: 46,403

*** (Approximately 60% population lives within a 10 mile radius from Bemidji)

Area: 3,056 sq miles

- Beltrami County has over 116,000 acres of lakes and 459,000 acres of state forest lands. It is comprised of 86 townships and contains portions of two Indian reservations, Red Lake and Leech Lake.
- Beltrami County was named after the Italian, Giacomo Beltrami, an early explorer of the area. In 1887 Beltrami County was part of **one of the state's original nine counties**: Benton, Dakota, Itasca, Ramsey, Mahkahta, Pembina, Wabasha, Wishington and Wahnata. The County was created in 1866 and organized in 1896 with 137 townships.



History:

- Solid Waste Services contracted out (Facility Ownership Changed from Public to Private)
- 2015 Environmental Services Director Retired
 - Solid Waste was part of Environmental Services
- 2015 New Environmental Services Director didn't want to do Solid Waste tasks, County Engineer offered to take Solid Waste and formed a County Public Works Department.
- 2015 Board of Commissioners decided to build a Transfer Station (CAP Grant with Partner Counties)
- 2016 New Solid Waste Administrator, Public Works GIS Specialist, and Public Works Safety Coordinator Position
 - Department of 1 employee
 - First Day: New storage room turned into Office
 - File storage boxes filled the office with old Solid Waste Files.
 - Told Solid Waste Duties shouldn't take up much of my time.
 - Once you get your office arranged you will take over the Solid Waste Billing (1,100 commercial accounts)
 - Figure it out as you go.
- 2016 Transfer Site Review and Building Design

History :

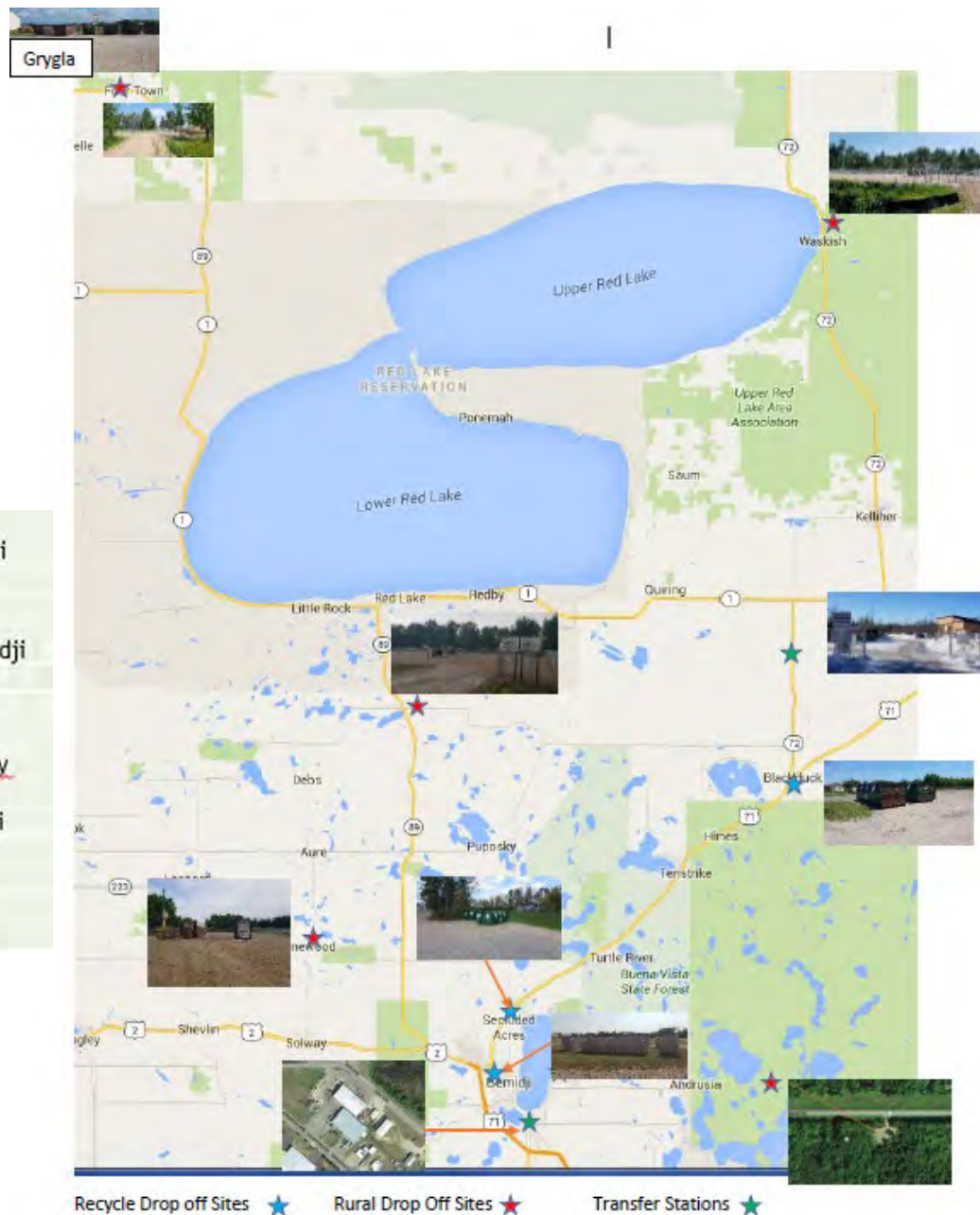
- 2016 Current Transfer Station Owner lobbied to stop the CAP Grant, due to stranded asset.
- Aug 2016-July 2017 Purchased current transfer station (Stranded Asset)
- 2017 New Solid Waste Support Tech Department of 2 employees
- New Lease agreement, service agreement July 2017 to December 2019
- 2017-2018 Remodeled both Bemidji and Blackduck Transfer Station/New MPCA Permits (CAP Grant)
- 2018 Moved and remodels 3 of the Remote Transfer Sites
- 2018 Took over Transfer Trailer Hauling Contract, and added Polk County to the Hauling Contract
- April 2018 Started up an **AG/Boat Wrap Collection Program**
- 2018 Renew Demolition Landfill Permit that is going to expire, re-permitted Jan 2019
- 2019:
 - Feb-Single Sort Recycling
 - Remodel last 2 Remote Transfer Sites
 - Add Hubbard County to the Hauling Contract
 - Continue Red lake Ice fishing Human Waste Diversion Effort
 - Final Cover at Demolition Landfill

History :

- 2019:
 - Continue to look at more recycling opportunities within the Bemidji City Limits
 - County Decided to take over operations at the end of service contract
 - Hired 1 employee September 2019 to help with transition
 - Hired 12 more employees on Dec 16, 2019
 - Facility Lease ended
- 2020:
 - Take over facility operations (Dec 16, 2019)
 - 2 Transfer Stations
 - 6 Remote Transfer Sites
 - 3 Remote Recycle Site
 - 1 Demolition Landfill
 - New remote Battery Collection Program
 - Design Recycling Building and Office Remodel
 - Finish Landfill Final Cover
 - Design and Build Reuse Area
 - Decrease contamination of all waste streams (Education, Enforcement)
 - Update 40 year old Solid Waste Ordinance
 - Maintain Operations (Revenue –vs- Operations) COVID
- 2021:
 - Maintain Current Operations

Solid Waste department Foot Print

Transfer Station	
Bemidji Transfer Station (SW-587-001)	751 Industrial Park Dr SE, Bemidji
Blackduck Transfer Station (SW-529-001)	33003 HWY 72 NE, Blackduck
Demolition Landfill	
Beltrami County Demolition Landfill (SW-306-001)	2331 N. Plantagenet Rd SE, Bemidji
Remote Transfer Site	
Pinewood Transfer Site	16909 Grange Rd NW, Pinewood
Waskish Transfer Site	56162 Waskish Rd NE, Waskish
Island Lake Transfer Site	8530 Lumberjack Rd NW, Puposky
Fourtown Transfer Site	68030 Hwy 89 NW, Grygla
Ten Lakes Transfer Site	23170 Power Dam Rd NE, Bemidji
Recycle Drop Off Site	
Old Fair Grounds	2115 23rd St NW, Bemidji
Northdale Oil	7962 Jon Ave NW, Bemidji
City of Blackduck	Railroad Ave, Blackduck



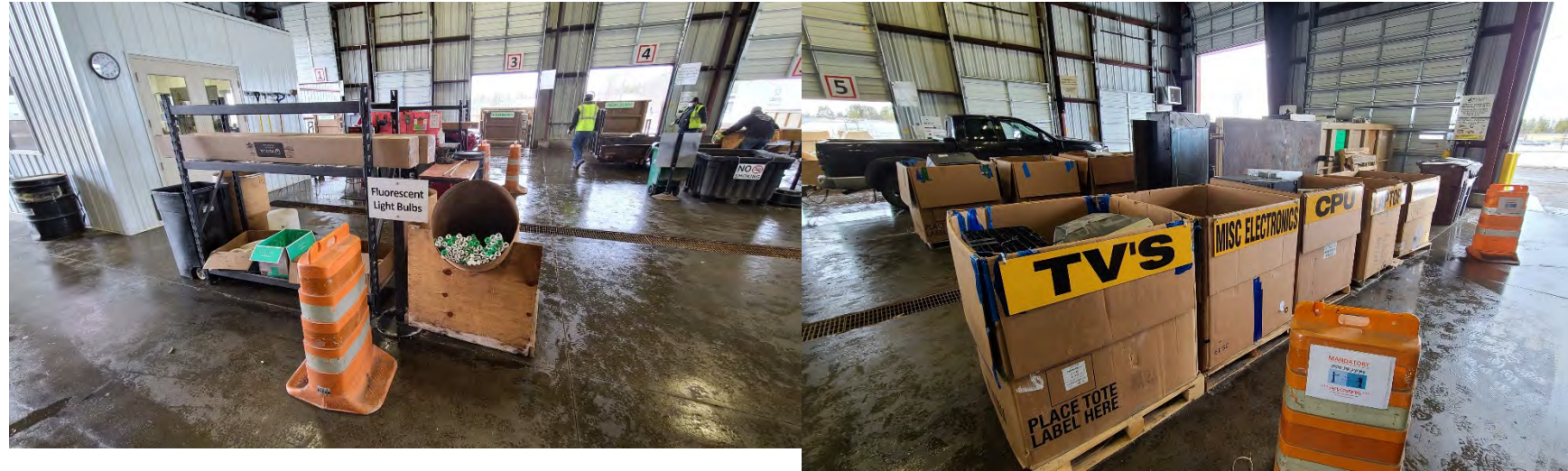
Partnerships (Reduce Costs, and provides resources that may not be available otherwise)

- Regional:
 - Polk County 6 County Coalition
 - Joint Powers Board
 - Grants
 - Northwest Mn Household Hazardous Waste Facility (Supports 10 Counties)
 - Joint Powers Board
- Local:
 - County Solid Waste Committee
 - Bemidji State University Environmental Studies
 - Sanford Green Committee
 - Habitat for Humanity (Restore)

Bemidji TS

Self Haul Daily Traffic

500 to 700 vehicles



Blackduck TS

Daily Traffic
50 to 90 Vehicles



2020 Textile Diversion Program:

- Partnership with Disabled American Veterans (DAV)
 - DAV has other sites as well but convenience is everything, 1 stop shop....



2020 Restore/Reuse Area (Bemidji and Blackduck Transfer Station)



- Reuse Area Rules:
 - Sign Waiver
 - Only 4 Items at a time, track who and what
 - Soft Opening (Due to COVID)
 - Open by appointment only
 - Tuesday's: Habitat for Humanity (Restore) comes and gets as much stuff as they want from the Reuse Area.
 - 2020: 580 Items Diverted, plus 109 bikes



The Following items are NOT ACCEPTED in the REuse Area:

- Car Seats
- Mattresses
- Industrial Chemicals and Hazardous items
- Clothing, blankets, or other textiles (please donate usable textiles)
- Computers and fax machines
- Electronics
- Food (Please bring to local food shelf)

ACCEPTABLE Items for the Reuse Area

- Bikes
- Tools and hardware
- Toys and games
- Books
- Gardening supplies
- Useable Paint
- Misc. Household Hazardous Waste (Example: Cleaning Supplies) in original labeled container
- Etc.....Ask Solid Waste Employee

Beltrami County Demo Landfill Compost Area

Yard Waste Compost:

Average: 1,300 CY per year



Beltrami County's AG Wrap/Boat Wrap Program



*Do not include twine, vents, zippers, supports, straps, ropes or trash of any kind.
Do not include felt or fabric coated plastic boat wrap from factory.*

Bags are available at both the Bemidji and Blackduck Transfer Station

For more information call the Beltrami County's Solid Waste Office at 218-333-8187 or visit the Beltrami County's Website (Solid Waste)

Program hurdles: "Contamination, program changes"

- Sep 2018 Revolution Plastic stopped accepting Bale Wrap.
- Just started the program in 2018, and then the program changes without warning. Purchased \$3000.00 of recapture bags.
- Didn't find out until Spring 2019 about the program change:
 - We had collected around 140 full recapture bags full of Bale Wrap, that ended up going to the landfill .



Still the Right thing to do (economics)???

- Recapture Bags are still Provided for Free for program participants,
 - received more in 2020 from RAM Grant
- Would like to find a market for Bale Wrap, Currently just send it to the Landfill.

**Accept, Bale, and Store primarily Boat Wrap currently

Website lists Local Non-Profit Reuse Sites:

Bring your Recycling donations these locations:

Habitat for Humanity ReStore

1357 Exchange Ave SE
Bemidji, MN 56601
218-444-6398

Seventh Day Adventist Clothing Depot

810 15th St NW
Bemidji, MN 56601
218-751-1985

Food Shelf

1260 Exchange Ave SE
Bemidji, MN 56601
218-444-6580

Churches United

702 Beltrami Ave NW
Bemidji, MN 56601
218-444-1380

St Philip's Clothing Depot

125 8th St NW
Bemidji, MN 56601
218-444-3835

Good Will

407 Beltrami Ave NW
Bemidji, MN 56601
218-759-2147

St. Mary's Mission Store

Hwy 1
Red Lake, MN
218-679-3615

To get ride of larger items such as motor vehicles, campers, mobile homes, etc. contact your local auto salvage yard.



Consumers: change of philosophy?

Non-profit junk business focus on salvaging valuable resources...

Source Separated Organics Composting Program

Shared grant with Polk, Hubbard, and Clearwater County:

Beltrami County Program:

Received Equipment in 2019

- 5 Filter Units/5 Receiver Containers/2 Cart Tippers

Green Corps Member supported 2019-2020 Program Year

Available at Both Transfer Stations:

- Participation Agreement
- Retrofitted all receiver containers in 2020

- Participants:
 - Bemidji State University
 - 3 Businesses
 - 2 Charter Schools
 - 82 Residents



Tons delivered to Polk County Composting Facility:
2019: 3.15 Tons
2020: 18.38 Tons

2019 Pumpkin Smashing



GO GREEN THIS HALLOWEEN AND COMPOST YOUR PUMPKIN!

The Bemidji Transfer Station will collect & SMASH pumpkins on Nov. 2.

**@
751 Industrial Park Drive
Bemidji
Dried corn, hay, straw and mums are also accepted.**



Help divert pumpkins from landfills. Pumpkins are full of nutrients for soil!

Remove all decorations candles, yarn, stickers, googly eyes. Acrylic & washable paint are OK, compostable

**CAN'T ATTEND? SIGN UP FOR THE COUNTY COMPOST PROGRAM AND DROP OFF YOUR PUMPKINS + FOOD SCRAPS YEAR ROUND
FOR MORE INFO CALL AILI - 218-333-8297**



The event:

290.7 lbs of Pumpkins
Diverted from a landfill.

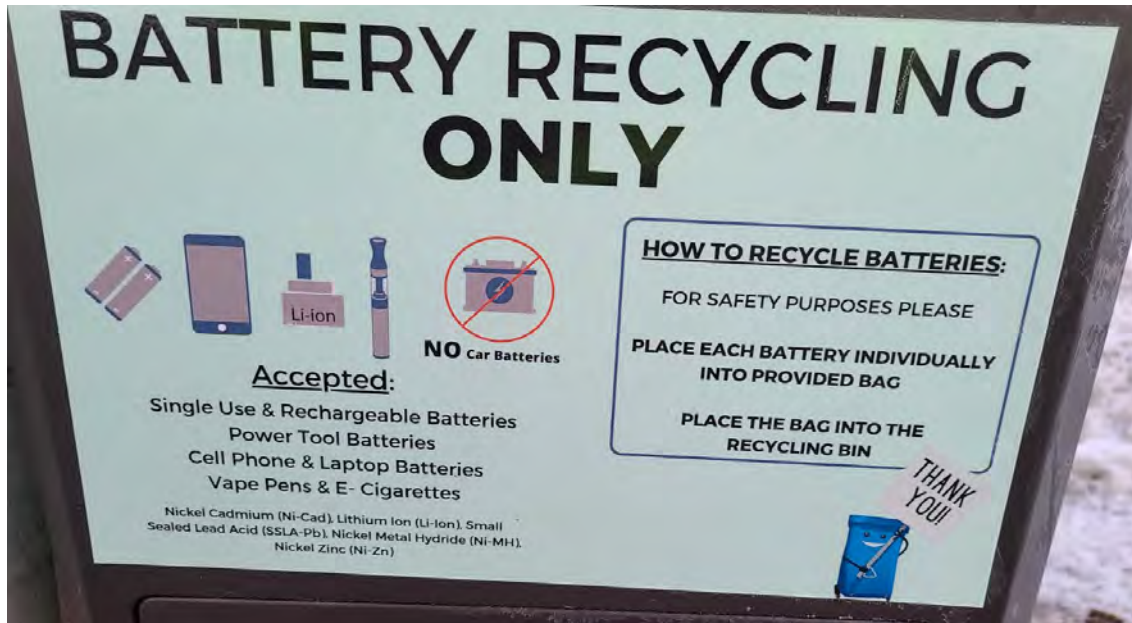
3 more residents signed
up to participate in the
Compost Program

3 more residents look
information about the
Compost Program

Battery Fires?



- Problem: Starting Fires at processing facilities, what can we do?



Partnerships: Sanford Health Green Committee participant.

- 2017 started to work with local healthcare facility to develop a Sharps disposal program as part of their community outreach program, in December 2018 it was fully operational.



Sharps Drop Box Now Available At Sanford Health Bemidji

Rachel Johnson — Dec. 12 2018



A sharps drop box for used or unwanted medical needles and lancets is now available at Sanford Health in Bemidji.

This is Bemidji's only sharps drop box and offers a safe and convenient way to dispose of used medical needles and lancets.

The box is located at Sanford Health Bemidji at 1611 Anne Street NW in the patient entrance. People may drop off their sharps seven days a week from 7:30 a.m. to 7:30 p.m.

Using a chute loading door, contents are secured in the drop box and cannot be removed unless the service door is unlocked.

The contents of the drop box will be handled by trained staff and transported to licensed waste haulers.

Product Exchange:

Operational Changes made it possible to track quantities:

2020: 202 gallons of paint was reused



Repair Old Appliances Program

- December 2018 Signed agreement with local used appliance dealer/repairman
 - Fix repairable appliances and Sell
 - Approved by County Board
 - Liability Insurance
 - Signed Reuse/Fix it Agreement and Release of Liability
 - Professional Repair Business

2018 Results: 85 Appliances

2019 Results: 68 Appliances

2020 Results: 91 Appliances

- 29 Washers
- 29 Dryers
- 28 Fridges
- 5 Freezers

Shingle Program



Started in 2019:

2019: 3040 CY

2020: 2084 CY

Reduces volume in Landfill

Uses: Dust Control, Stabilization





Example: Soil Stabilization

Concrete diverted from Landfill: Beneficial Use

- 2018 started to look at a contractor to crush concrete, no one could tell me when the last time the pile was crushed (3yrs is the storage limit, per MN Rule 7035.2855)
- 7436 Yards Crushed in 2019, 2020 material was used for County Highway Project.



How do we try and reach the Community

- Presentations/Education:
 - BSU Environmental Studies (Class presentations)
 - Townships
 - Transfer Station Tours
 - Briefing the Boards
- Marketing
 - Website
 - Lakeland News
 - Radio
 - Local Paper
 - TV Weekly
 - Local Magazine Publication
 - 2021 Currently a Monthly Radio Segment (Chat a bout)
 - 2020 Tried On-line sponsored content
 - Earth Day Publication (2 Page Flyer)
- Enforcement



**WE TRY TO
USE A
MULTIMEDIA
APPROACH**

Food scraps aren't garbage! Food scraps belong in the compost!

Food scraps belong in the compost!

it's true! even meat and cheese!



Beltrami County now offers composting!

It's easy to compost:

1. sign up.
2. collect your food scraps.
3. drop off at the Transfer Stations.

Find out more and sign up at

Beltrami County Solid Waste
218-333-8297
www.co.beltrami.mn.us
click on Solid Waste tab

Compost

Wishcycle (verb):

the act of placing non-recyclable items in the recycling with the hope they will be recycled.



Non-Recyclable

- STYROFOAM • GARDEN HOSES**
#3-7 PLASTICS • PLASTIC BAGS
FROZEN FOOD BOXES • STRAWS
#3-#7 PLASTIC CUPS • GLASSWARE
TO-GO COFFEE CUPS • PIZZA BOXES
PLASTIC UTENSILS • CERAMIC DISHWARE
WAXED CARDBOARD • TOOTHPASTE TUBES

WWW.CO.BELTRAMI.MN.US
218-333-8187

BATTERIES DON'T BELONG IN YOUR HOME RECYCLING OR TRASH!

Batteries in your recycling or trash can start a fire. Take to retail or Transfer Station for hazardous waste drop-off.



www.co.beltrami.mn.us

Attention Land Owners & Contractors

Land owners and contractors MPCA Requires a Pre-renovation or Demolition Requirement for any institutional, commercial, public, industrial or residential structure, installation or building (This includes any structure or building containing condominiums or individual dwellings operated as a residential cooperative, but excluding residential buildings having four or fewer dwelling units.)

Refer to the MPCA website for the most updated information.

- Need to have an Asbestos inspection done by a qualified inspector.
- Must notify MPCA 10 days prior to Demolition.
- Must do a Pre-Demolition Environmental Checklist

Pre-renovation or Demolition Requirements (Residential)

Common wastes that must be removed before demolition (Good Practice use the Pre-Demolition Environmental Checklist on the MPCA Website), an asbestos inspection is not required. If you are still concerned about asbestos you can have the structure inspected but there is no requirement to submit paperwork to MPCA for residential building having four or fewer dwelling units.

- Appliances
- Asbestos
- Electronics
- Environmental and safety controls
- Hazardous Waste
- Lead-containing items
- Lighting Components
- Oils
- Refrigerants and halons
- Solid Waste
- Submersible well pumps



See MPCA Demo Checklist on the MPCA Website:

<https://www.pca.state.mn.us/waste/construction-and-demolition-waste>

NO HOUSEHOLD GARBAGE IN THE RECYCLING

EMPTY ALL CONTAINERS BEFORE RECYCLING.



Food and liquid can ruin other recyclables.
For more info contact:
Beltrami County Solid Waste
218-333-8297 - www.co.beltrami.mn.us
click on Solid Waste tab

OOOPS!
PLEASE LEAVE THESE ITEMS OUT OF THE RECYCLING!

- No Batteries or Electronics (drop-off only)
- No household garbage
- No Flammables, Fuel Tanks or Batteries
- No Plastic Bags (return to retail)
- No Shredded Paper (drop-off only)
- No Tangles (no hoses, wires, chains, or electronics)

Any questions, please call 218-333-8187

DID YOU KNOW... YOU CAN RECYCLE YOUR SHRINK WRAP BOAT COVER!

FREE

Boat Wrap RECYCLING



Clean & dry shrink wrap material is accepted at the Bemidji or Blackduck Transfer Stations

***Note: shrink wrap does not belong in home recycling. Collected separately at Transfer Stations.**

www.co.beltrami.mn.us 218-333-8187

DON'T TRASH ME. COMPOST ME.



LEARN MORE HERE
BELTRAMI COUNTY SOLID WASTE
218-333-8297

Proper Disposal of e-cigarettes Beltrami Household Hazardous Waste

Must dispose of at the Bemidji or Blackduck Transfer Station, at no cost to Beltrami residents.

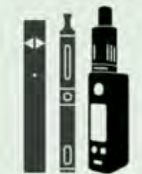
Tanks, Pods & Cartridges



E-Liquids & Bottles



Batteries & Devices



BATTERIES DON'T BELONG IN YOUR HOME RECYCLING OR TRASH!

E-liquid or juice may contain nicotine, vegetable glycerin & propylene glycol and should be treated as hazardous waste.



Batteries need to be recycled at the HHW facility where they will be sorted & processed and can be made into new products.

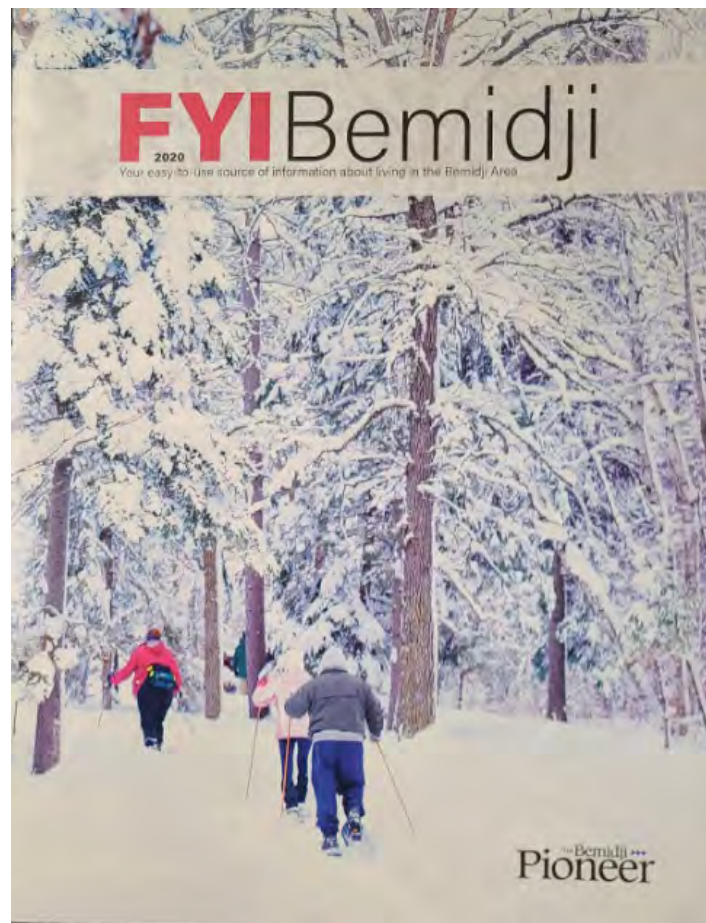
Bemidji Transfer Station
751 Industrial Park Dr.
Bemidji | 218-333-8187

Blackduck Transfer Station
3303 Hwy. 72 NE,
Blackduck | 218-835-6961

www.co.beltrami.mn.us click on Solid Waste tab

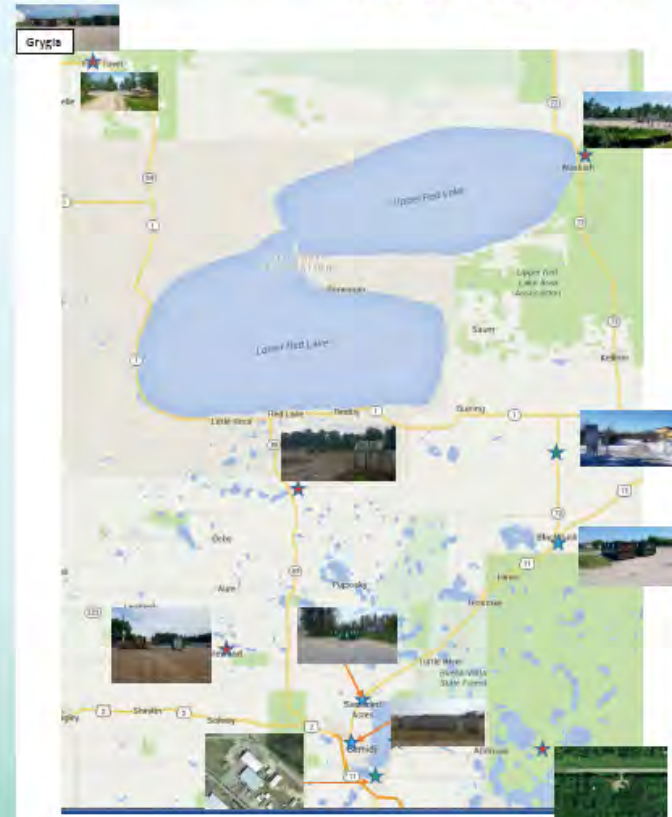
Back Cover FYI Magazine

Free Publication!!



BELTRAMI COUNTY RECYCLING

WHERE TO RECYCLE



Recycle Drop off Sites ★ Rural Drop Off Sites ★ Transfer Stations ★

Recycling Transfer Sites
Acceptable Items
Type 1 and 2 Plastic Containers
Glass Containers
Metal Containers
Fiber (Paper/Cardboard) Products

Not Acceptable
Scrap Metal
other types of plastic
Card board with wax coating
all other items not listed as acceptable
Household Hazardous Waste

Bemidji Transfer Station
Acceptable Items
Mixed Municipal Solid Waste
Demolition and Construction Waste less than 1 yard
Recyclable Containers (Type 1 and 2)
Batteries
Appliances
Fluorescent Bulbs & Ballasts
Electronics
Tires
Household Hazardous Waste
Carpets/Furniture
Used Oil and Filters
Scrap Metal
Gasoline
Antifreeze

Not Acceptable
Commercial-Hazardous Waste
Commercial-Used Oil & Filters
Commercial-Gasoline
Commercial-Antifreeze

Remede Transfer Sites
Acceptable Items
Residential Household Garbage
Type 1 and 2 Plastic Containers
Glass Containers
Metal Containers
Fiber (Paper/Cardboard) Products

Not Acceptable
Scrap Metal
Demolition Debris
Appliances
Electronics
Non-Flammable Waste
Household Hazardous Waste

Blackduck Transfer Station
Acceptable Items
Mixed Municipal Solid Waste
Demolition and Construction Waste less than 5 yards
Recyclable Containers (Type 1 and 2)
Batteries
Appliances
Fluorescent Bulbs & Ballasts
Electronics
Tires
Household Hazardous Waste
Carpets/Furniture
Used Oil and Filters
Scrap Metal
Gasoline
Antifreeze

Not Acceptable
Commercial-Hazardous Waste
Commercial-Used Oil & Filters
Commercial-Gasoline
Commercial-Antifreeze

WHAT'S THE COST? COMMERCIAL AND RESIDENTIAL CUSTOMERS

Funding of Solid Waste Program (Disposal Fee)
Residential, single-family homes, duplexes, apartments, and mobile home: Property Tax
Special Assessment On:
- \$152 per year (that is only \$12.66 per month to process, and dispose of all your waste, except Demolition Debris and By-Pass Material).
- \$114 (Seasonal)

Commercial (Business) OR Beltrami County Non-Resident Waste:
- Volume Based Billing (Monthly/Quarterly)
Commercial Businesses will see two invoices:
- 1 from Beltrami County Solid Waste for disposal.
- 1 from Commercial Hauler (American Disposal, Waste Management, Jon's Refuse) A Commercial Business can self-haul as long as you register with the County Solid Waste Department.

Beltrami County Solid Waste

751 Industrial Park Dr. SE Bemidji, MN 56601-5423 • 218-333-8187 | 218-333-8105 • www.co.beltrami.mn.us *click on Solid Waste tab*



Updated Yearly-Earth Day Flyer

April 22nd

Everyday is Earth Day in Beltrami County!

HEY, MINNESOTA!

DO YOU KNOW WHAT TO THROW?

For recycling to thrive, we need to recycle the YES things and keep the NO things out.

When in doubt throw it out!
Help keep recycling clean!

YES!
Always recycle

BOTTLES & CANS
Empty, caps on

BOXES & PAPER
Flatten, dry

GLASS
Empty, caps on

NO!
LEAVE OUT

NO BAGS
RETURN TO RETAIL

NO BATTERIES OR ELECTRONICS
HAZARDOUS WASTE DROP-OFF

NO CORDS, HOSES OR CHAINS
DONATE OR TRASH

Hey, Beltrami! Composting is easy!

YES!
Always Compost

Food Scraps: fruit, vegetables, grains, rice, meat, bones, dairy

YES!
Always Compost

Soiled Paper: compostable plates, napkins, paper towels

NO!
Leave out

Recycling & Landfill items: metal, glass, plastic, cartons, utensils, wrappers, styrofoam, diapers, cat litter

Sign up to start composting with Beltrami County Solid Waste & receive free compostable bags.

Bemidji Transfer Station
751 Industrial Park Dr. SE Bemidji, MN
Brian Olson | 218-333-8278 | brian.olson@co.beltrami.mn.us
Shannon Schmidt | 218-333-8105 | shannon.schmidt@co.beltrami.mn.us
Jared Davidson | 218-333-8187 | jared.davidson@co.beltrami.mn.us

MN Waste Hierarchy

Blackduck Transfer Station
3303 Hwy 72 NE, Blackduck Wally | 218-835-6961

Beltrami County Demo Landfill
2331 North Plantagent Road, SE Landfill Operator | 218-766-0392

BATTERIES DON'T BELONG IN YOUR HOME RECYCLING OR TRASH!

Batteries in your recycling or trash can start a fire. Take to retail or Transfer Station for hazardous waste drop-off.

BELTRAMI COUNTY 2020 FEE SCHEDULE

	Residential	Commercial
Mixed Municipal Solid Waste	Free	See Attendant
Demolition & Construction (5 yards or less)	\$14/cubic yard	\$14/ cubic yard (CY)
Furniture/curb/curb material	\$24/CY or \$140/ton	\$24/CY or \$140/ton
Container & Fibers	Free	Free
Used Oil & Filters	Free	Not Accepted!
Fluorescent Bulbs	Free	0.25 each
Batteries	Free	\$1 per pound
Automotive Batteries	Free	Free
Appliances - White goods	Free	\$30 each
Tires (automobile)	Free	\$2 - \$9 each
Tires (tractor/semi trailer)	\$181.75	\$181.75/ton
Electronics - e-waste	Free	\$30 each or 0.49 pound
Metal	Free	Free
Household Hazardous Waste	Free	Not Accepted!
Gasoline	Free	Not Accepted!
Antifreeze	Free	Not Accepted!

Bring the following items to the Bemidji or Blackduck Transfer Stations for correct disposal.

These items don't go in your recycling or household trash!
Please do NOT place items at rural drop off sites.

Medications can be disposed of at **Sanford Pharmacy**, 1611 Anne St. Bemidji
Bemidji Law Enforcement Center, 613 Minnesota Ave NW

Clothing in good condition can be donated to:
St. Phillips Clothing Depot
Seventh Adventist Clothing Depot
Good Will

Attention Land Owners & Contractors

Land owners and contractors MPCA Requires a Pre-renovation or Demolition Requirement for any institutional, commercial, public, industrial or residential structure, installation or building (This includes any structure or building containing condominiums or individual dwellings operated as a residential cooperative, but excluding residential buildings having four or fewer dwelling units.)

Refer to the MPCA website for the most updated information.

- Need to have an Asbestos Inspection done by a qualified inspector.
- Must notify MPCA 10 days prior to Demolition.
- Must do a Pre Demolition Environmental Checklist

Pre-renovation or Demolition Requirements (Residential)

Common wastes that must be removed before demolition (Good Practice use the Pre-Demolition Environmental Checklist on the MPCA Website), an asbestos inspection is not required. If you are still concerned about asbestos you can have the structure inspected but there is no requirement to submit paperwork to MPCA for residential building having four or fewer dwelling units.

- Appliances
- Asbestos
- Electronics
- Environmental and safety controls
- Hazardous Waste
- Lead-containing items
- Lighting Components
- Oil
- Refrigerants and halons
- Solid Waste
- Submersible well pumps

See MPCA Demo Checklist on the MPCA Website:
<https://www.pca.state.mn.us/waste/construction-and-demolition-waste>

Check out our website for more information!
www.co.beltrami.mn.us
click on Solid Waste and Organics/Recycling

<p>Bemidji Transfer Station Mon & Wed-Fri 7-6 Tue (closed to public) Saturday 7-3 Sunday CLOSED</p> <p>Blackduck Transfer Station Mon & Th 9-6 Tuesday 8-5 Friday 8-5 Saturday 8-1:30 Wed & Sunday CLOSED</p> <p>Beltrami County Demo Landfill <u>April-October</u> Tue-Sat 7:45-3:45 <u>November-March</u> Tuesday 7:45-3:45 Fri-Sat 7:45-3:45</p>	<p>Pinewood Rural Site 16909 Grange Rd. NW, Bemidji M-F 8:00-6:00 Sat 8:00-3:00</p> <p>Island Lake Rural Site 8530 Lumberjack Rd. NW, Puposky</p> <p>Ten Lakes Rural Site 23170 Power Dam Rd. NE, Bemidji Mon & Th 5:30-8:30, Sat 8:00-3:00</p>	<p>Fourtown Rural Site 63063 Fourtown Rd. NW, Fourtown everyday - 9:00-8:00</p> <p>Waskish Rural Site 56162 Waskish Rd. NE Waskish</p> <p>Northdale Oil Recycle Drop off Irvine Ave. NW & Jon Ave. NW Behind Target: 2115 23rd St NW</p>
--	--	---